

The Mews at Cary Mill

1708



|            |  |
|------------|--|
| Units      | 6  |
| Built      | 2008   |
| Parking    | 12 garage/2 lot                                      |
| Heating    | Electric   Heat Pump                                 |
| Cooling    | Central Air  |
| Cooking    | Electric   |
| Cabinets   | Maple  |
| Counters   | Granite  |
| Appliances | Professional Series Stainless                        |
| Flooring   | Wood   Frize   |
| Dues       | \$188/month  |
| Includes   | Water/sewer, trash, snow removal, building insurance |
| Taxes      | TBD  |

**DESIGN MAKES THE DIFFERENCE**

Sweeping, clean lines and walls of glass overlooking private outdoor spaces are just some of the features brought to you by the Mews' West Building.

With a contemporary flair and modern building elements, The West Building is another example of the growing diversity that is defining Richmond's new architecture.

The West is comprised of one and two story luxury spaces with understated yet sleek finishes making it ready to accept any decor selections. The spacious interiors and private outdoor spaces make it comfortable and livable.

Contemporary urban living at it's best.

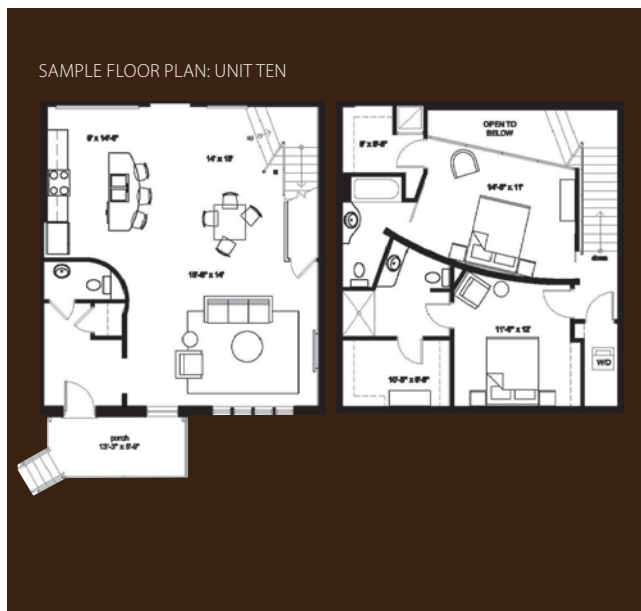
**CREATING FROM WITHIN**

Using the bricks, blocks and beams that have been shaped by a century of use, the East Building now offers 7 unique warehouse spaces that combine Richmond's past with the bright future.

The exposed nature of warehouse living means character abounds and the contemporary design means the spaces flow. The flexibility of the plans means options for living and the volume of space showcases the design.

Luxury, convenience and intelligence are at the core of the East.

|            |   |
|------------|---|
| Units      | 7   |
| Built      | 1900-1940   |
| Renovated  | 2008  |
| Parking    | 12 garage/2 lot   |
| Heating    | Electric   Heat Pump  |
| Cooling    | Central Air   |
| Cooking    | Electric  |
| Cabinets   | Maple   |
| Counters   | Granite   |
| Appliances | Professional Series Stainless                                   |
| Flooring   | Wood   Frize  |
| Dues       | \$202/month   |
| Includes   | Water/sewer, hot water, trash, snow removal, building insurance |
| Taxes      | Abated in East  |



**UNITS**

|  |   |
|--|---|
| one   1260 sqft<br>2 bed   2 baths   patio             | four   1660 sqft<br>2 bed   2.5 bath<br>balcony   patio |
| two   1660 sqft<br>2 bed   2.5 bath<br>balcony   patio | five   1260 sqft<br>2 bed   2 baths   patio             |
| three   1260 sqft<br>2 bed   2 baths   patio           | six   1660 sqft<br>2 bed   2.5 bath<br>balcony   patio  |

**UNITS**

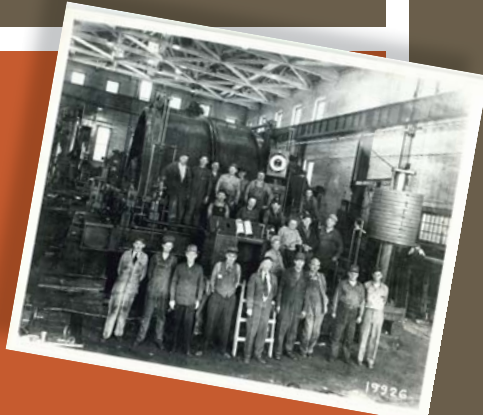
|   |   |
|---|---|
| seven   946 sqft<br>1 bedroom   1.5 baths | eleven   1375 sqft<br>2 bedroom   2.5 baths |
| eight   945 sqft<br>1 bedroom   1.5 bath  | twelve   1230 sqft<br>1 bedroom   1.5 bath  |
| nine   1368 sqft<br>2 bedroom   2 baths   | thirteen   1442 sqft<br>2 bedroom   2 bath  |
| ten   1543 sqft<br>2 bedroom   2.5 bath   |   |

## THE TEAM

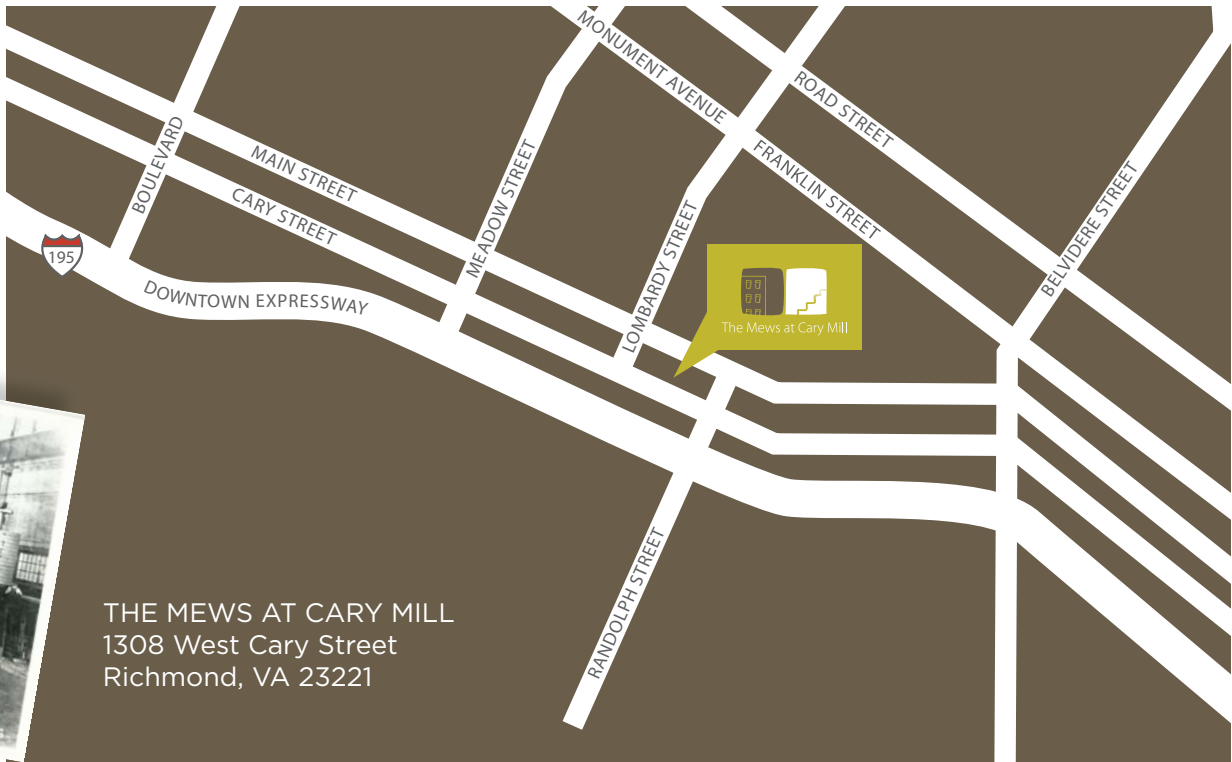
Developer: Shelmar Investments  
Monument Construction  
Architect: Johannas Design Group  
Contractor: Monument Construction  
Agent: One South Realty Group

## THE ORIGINAL PROPERTY

Sometime around the turn of the century, CW Montgomery, Stair Builder and Office Fittings built a warehouse that would grow over time. Housing numerous businesses, including Cary Lumber and Manufacturing and the CF Duggins Planing Mill, this historic warehouse was a mainstay of Richmond mill works for over 100 years.



THE MEWS AT CARY MILL  
1308 West Cary Street  
Richmond, VA 23221



## ONE CITY. ONE FOCUS. ONE UNIQUE REALTY GROUP.

One South Real Estate Group is the leading firm in the emerging Richmond market with knowledge of trends, development and the subtle differences in the vibrant neighborhoods that form our city. Bringing advanced marketing techniques to the new era of real estate, OSRG can offer pointed and substantial advice, to both buyers and sellers, in a fast paced and evolving market.



1435 WEST MAIN STREET, RICHMOND, VIRGINIA 23220  
[www.onesouthrealty.com](http://www.onesouthrealty.com)

804.353.0009 | 804.353.0991 FAX

Disclaimer | All information deemed reliable but not guaranteed. One South Realty Group and its agents make no warranties, either express or implied as to the validity of the information provided herein. Prices and availability subject to change without notice.

